



On-Board Battery Charger & Cable Connector Retrofit Kit

Models: T350, Speed Scrub 350



This kit includes the necessary parts to replace a defective charger, caused from backfeed, and retrofit parts to modify the cable connector configuration to prevent future battery charger damage. Install retrofit parts as instructed.

Kit Contents



On-Board Battery Charger Replacement Parts

Ref	Part No.	Description	Qty.
1	1220856	Charger, 24vdc 25a 100-240vac (on-board)	1
2	26395-2	Clamp, Cable, Stl, 0.38dx0.38w, 1hole	1
3	1205799	Screw, Btn, m5x0.8x16, 8.8, nl torx	5
4	1210807	Wire, Tie [w/.25" fir tree clip]	2

Cable Connector Retrofit Parts

Ref	Part No.	Description	Qty.
5	1020446	Connector, Anderson, 1321 Series	4
6	1217818	Sleeve, Heatshrink, 1.5id, 07.0L	1
7	33931	Screw, Pan, Phl, m4x0.70x30, ss	2
8	1240380	Plate, Washer, Battery, Connector	1
9	1239877	Plate, Wldt, Mount, Battery Disconnect	1
10	763115	Tie, Cable, 6.0L, 1.25 max	1

CABLE CONNECTOR RETROFIT INSTALLATION INSTRUCTIONS:

Installation Time: 1 Hour

Special Tools Required: Heat Gun

1. Park machine on a level surface.
2. Turn off machine and remove key.

FOR SAFETY: Before servicing machine, stop on level surface, turn off machine and remove key.

3. Disconnect the battery cable harness quick disconnect connector (Figure 1).



Fig. 1

4. Disconnect the battery cable harness from the batteries (Figure 2).

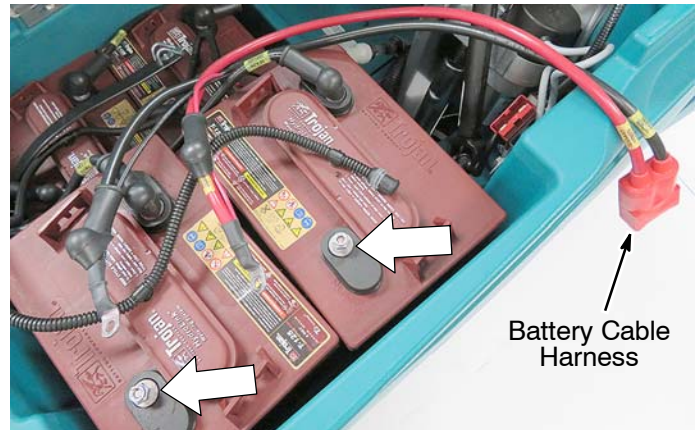


Fig. 2

5. Remove the double pole connector from the battery cable harness and discard. To remove connector, push the lock tab downward with a small flat-head screwdriver and pull the cable outward (Figure 3).

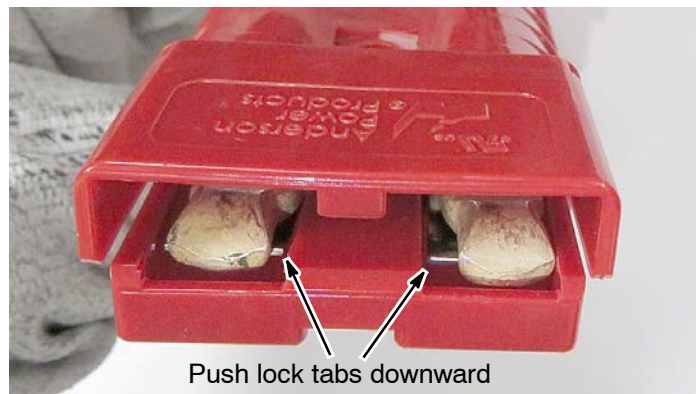
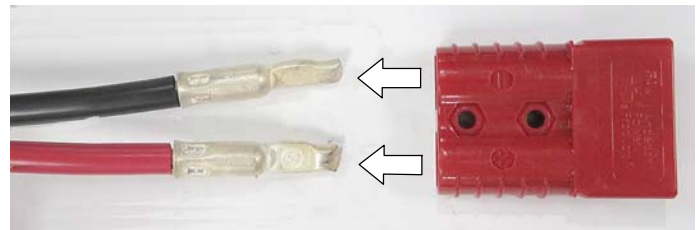


Fig. 3

6. Remove and discard the protective boot (Figure 4).



Fig. 4

- 7. Install the new single pole connectors on the battery cable harness (Figure 9). Fully insert the cable terminal into the connector until it clicks into position. Pull test the cable to ensure terminal is engaged with lock tab as shown.

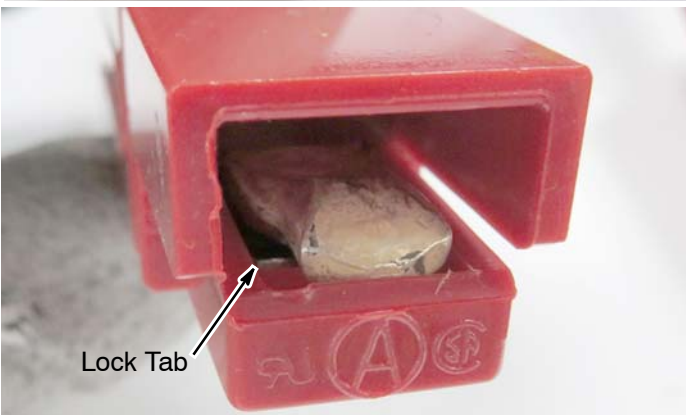
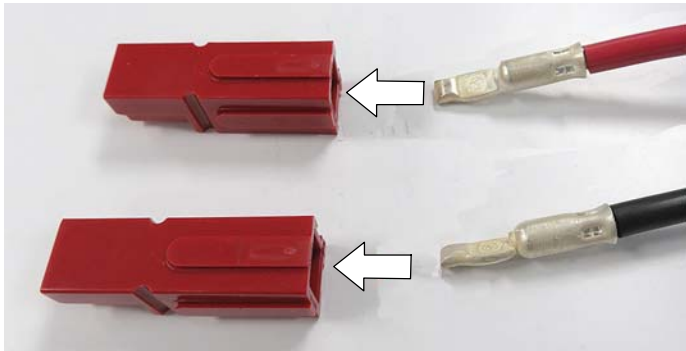


Fig. 5

- 8. Remove the battery cable connector bracket from the machine (Figure 6). Save mounting hardware.

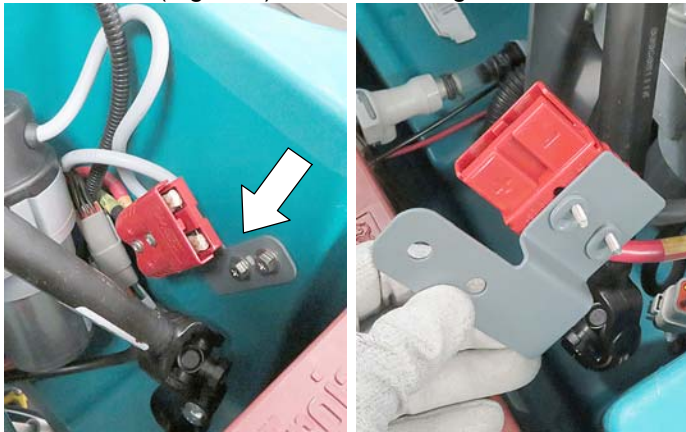


Fig. 6

- 9. Remove the double pole connector from the bracket and discard bracket (Figure 7). Save hardware.



Fig. 7

- 10. Remove the double pull connector from the battery cables and discard (Figure 8).



Fig. 8

- 11. Install a new single pole connector on the red cable (Figure 9).



Fig. 9

- 12. Using the supplied mounting hardware, attach the single pole connector to the new bracket as shown (Figure 10).

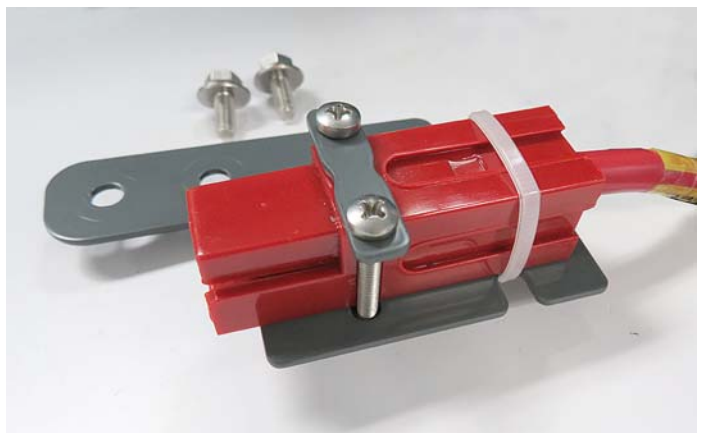


Fig. 10

13. Using existing hardware, mount the new cable bracket to machine at the same location (Figure 11).

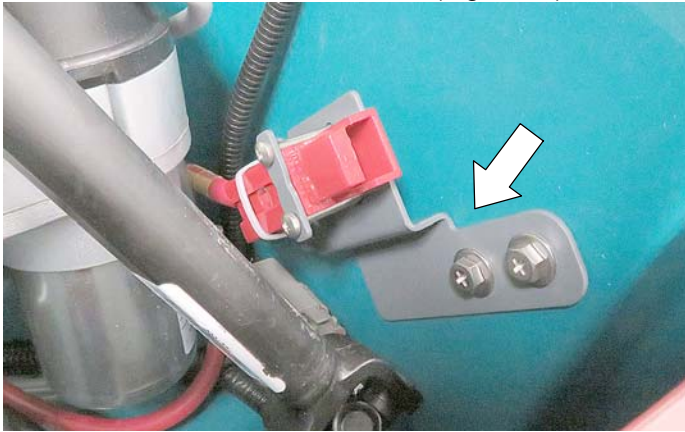


Fig. 11

14. Reroute the black cable from behind the actuator bracket to the center of the battery compartment as shown (Figure 12).

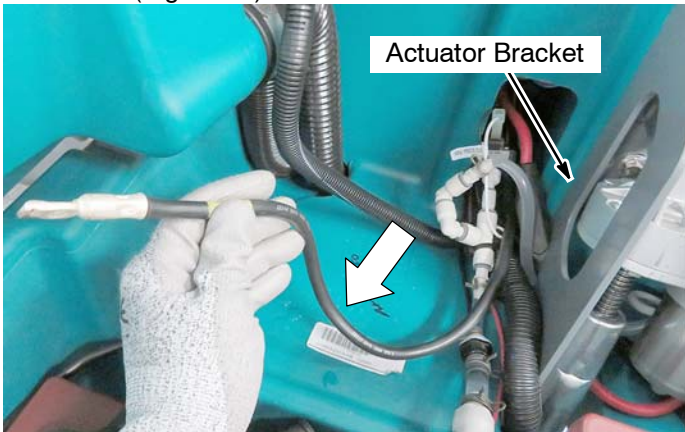


Fig. 12

15. Install a new single pole connector on the black cable (Figure 13).



Fig. 13

16. Slide the supplied heat shrink sleeve over the connector (Figure 14).



Fig. 14

17. Connect the single pole connector to the negative battery cable harness as shown (Figure 15).

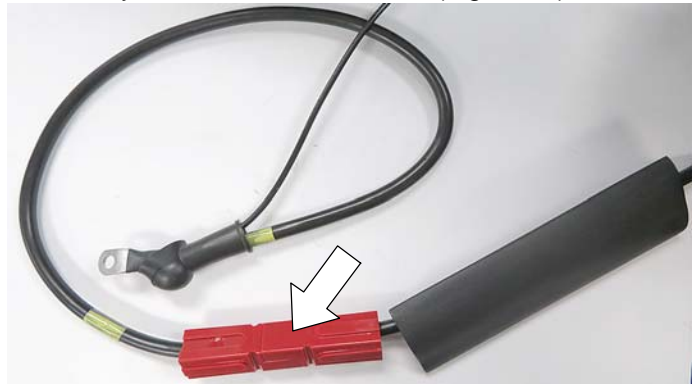


Fig. 15

18. Position the heat shrink sleeve over the connection and apply heat to sleeve to make connection permanent (Figure 16).



Fig. 16

19. Connect the battery cable harness to the batteries (Figure 17). Connect black cable (negative) first.

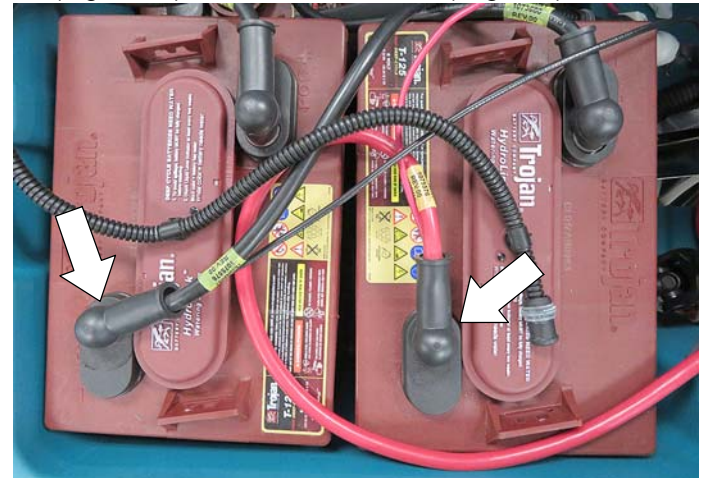


Fig. 17

20. Lastly, connect the positive battery cable connector to the new bracket connector as shown (Figure 18).

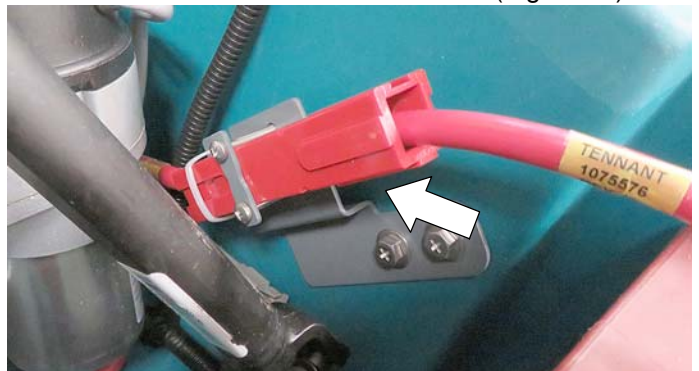


Fig. 18

21. Verify machine operation.